



# Aldwyn Primary School

Lumb Lane, Audenshaw, Manchester M34 5SF  
0161 370 3626 Email: [admin@aldwyn.tameside.sch.uk](mailto:admin@aldwyn.tameside.sch.uk)

Friday 10<sup>th</sup> January 2025



Monday 13<sup>th</sup> – Friday 17<sup>th</sup> January Science Week

Wednesday 15<sup>th</sup>  
January

Science Evening 5-6pm

Thursday 16<sup>th</sup> January

2MK Enrichment visit to Avro  
Museum

Monday 20<sup>th</sup> January

Fire Service visit to Y6

Tuesday 21<sup>st</sup> January

Dogs Trust visit to Y4

Thursday 23<sup>rd</sup> January

2H Enrichment visit to  
Avro Museum

Friday 24<sup>th</sup> January

Y6 Enrichment visit to  
Parliament

## Happy New Year!

We have had a wonderful first few days back in school following the Christmas break, the children are excited and ready to learn. The start of the term sees the introduction of new themes and topics throughout school, and alongside this are several enrichment opportunities. We hope the children have enjoyed their first week back as much as we have enjoyed ours and we look forward to the great half term ahead of us.

The children look very smart in their school uniforms, and we greatly appreciate your support in ensuring that they have the full and correct school uniform, including black school shoes and not trainers. We appreciate that during the icy weather, your child may have worn their trainers or boots as they have better grip. Once the ice has cleared, we do expect children to be wearing their black school shoes.

If your child has not yet brought their PE kit, please can you make sure it is in school for Monday.

### Indoor PE Kit

- White T-shirt (plain)
- Black shorts
- Pumps or trainers with non-marking sole for indoor games
- Bare feet for gymnastics



### Outdoor PE Kit

- White T-shirt (plain)
- Black shorts
- Trainers

**Children will not be permitted to participate in PE wearing their school jumper or fleece.**

**Children must get changed for PE. They must not come to school wearing part of their kit on PE days**

### Emergency School Closures



In the event of an unavoidable school closure, all parents will be notified in the first instance by email through Arbor, we aim to do this before 7.30am on the first day of a closure. The information will also be on the school website.

Good attendance and punctuality continue to be a priority at Aldwyn. We have an ambitious target for whole school attendance of 97%. Good attendance can be achieved by all when families and schools work well together.

### What can you do to help your child attend school regularly?



- Talk to your child about school
- Take a positive interest in your child's work, including homework
- Make sure your child knows why school is important
- Get everything ready for school the night before
- Arrange appointments before or after school or during the school holidays
- Take holidays during school holidays 2024 -2025 holiday dates are available on the school website
- Only grant days at home for genuine illness (you will know!)
- If your child is slightly under the weather, still send them into school – children often start feeling better as the day goes on and they get busy, and if the school is worried, we will call you.

Attendance for this week = 91.3%

Congratulations to 2MK and 5H whose attendance hit the Aldwyn target

Well Done!



## Chinese New Year



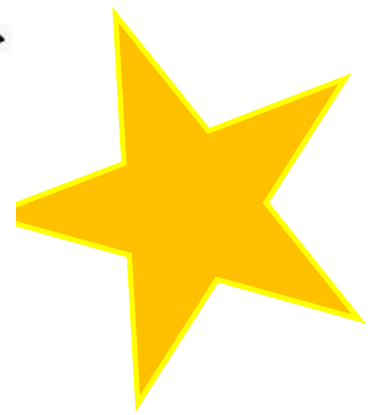
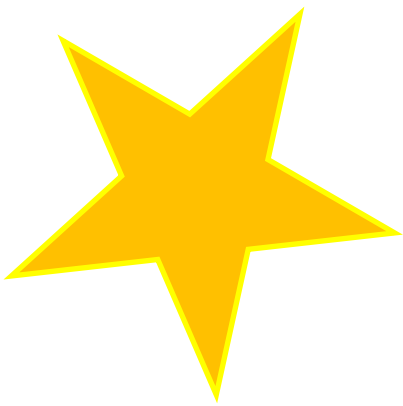
Celebrations for Chinese New Year will begin on Wednesday 29<sup>th</sup> January this year. To mark the celebration, Mrs. Phillips will be creating a special Chinese New Year school dinner on Friday 31<sup>st</sup> January. If your child usually has a packed lunch but would like the special dinner, please order the school dinner on Arbor – choose 'hot meal'. For children in KS2 who are not in receipt of free school meals, this will be payable via Arbor.



Please can we ask parents and carers to park respectfully within the local area, giving consideration towards the residents near to school and not blocking their access to or out of their properties. We also ask that whilst you are waiting in your vehicles at drop off and collection times that engines are turned off whilst your vehicle is stationary to reduce emission fumes to the residents and school community.

Thank You for your support in this matter.

# To be our best at



We will:

- Care for people and property
- Value others at all times
- Listen, think and follow instructions
- Be helpful, kind and polite
- Enjoy and achieve in all our work

Each week teachers choose a star of the week based on the Aldwyn Values.  
The winners of this week's awards are:

Jacob	Charlie	William	Aaliyan	Harrison	Anton
Grace	Emmiline	Deryn	Aurora	Dennie	Mousa
Thomas	Mason	Jude	Dawud	Eva Mae	Charlie
Grayson	Phoebe	Alfie	Elizabeth	James	Sacha
Theo	Lily	Denzel	Alexis	Darbey	

\*We would like to apologise to families as email notifications regarding the Celebration Assembly were not received this week. This was due to a technical issue which we were not aware of until Friday morning.

## The Birthday Message



We wish you many happy returns of the day.  
We hope you will be healthy and strong all the way  
Strong to do right, slow to do wrong,  
And thoughtful of others all day long.



This week we celebrate the birthdays of:

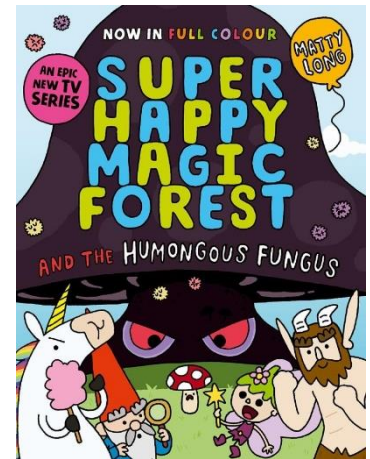
William	Elizabeth	Rowan	Hayden
Ivy	Kayden	Millie	Ralph



# Aldwyn Book Corner

## Super Happy Magic Forest and the Humongous Fungus

**Author Matty Long**



A Super Happy Magic Forest chapter book packed with illustrations and plenty of humour-this is the perfect read for fans of Dog Man and Captain Underpants (6+). Fun-filled frolics from award-winning author Matty Long. The Super Happy Magic Forest is the friendliest, most frolic-filled place in all the world, but very occasionally some evil-doer likes to come along and disturb the peace. That's when our five brave heroes to step up to save the day-there's Blossom the unicorn, Twinkle the pixie, Herbert the gnome, Hoofius the faun, and a plucky little mushroom called Trevor.

In Super Happy Magic Forest and the Humongous Fungus the heroes of the forest must fight against Fungellus the evil mushroom. Prepare for epic adventures, the odd picnic-break, and plenty of fun-filled frolics!

For more laugh-out-loud adventures with the Super Happy Magic Forest heroes, read Super Happy Magic Forest and the Portals of Panic.

### **Our Review Panel says...**

If you enjoy an epic quest and love an illustrated early chapter book, this book is for you!

With five loveable, happy heroes, a faun, unicorn, fairy, gnome and mushroom, there is a character for everyone. The book is a visual delight with detailed, colourful illustrations, which are scattered throughout the book, which also includes double page spreads of scenes. There are strong themes of friendship and working together on how to overcome the evil Fungellus before he takes over the Super Happy Magic Forest with his toxic spores. Humour is present throughout the illustrations, writing and speech bubbles, leading to lots of giggling together.

This book is fun to read aloud and is also good for readers starting to read chapter books. In addition to the text, there are speech bubbles from characters all throughout, which are popular with children to read aloud.

Suitable for a class read aloud from Early Years but especially suitable as a class read for KS1, where you can immerse yourself into adventure, silliness and lots of fun! It is part of a series of books, so be prepared to read other adventures by Matty Long. It has also recently been made into a new television series due to its popularity.

Review taken from [www.booksfortopics.com](http://www.booksfortopics.com) A wonderful website full of recommendations of books for all ages, topics and genres.





# Science Night

Wednesday 15th January 5pm - 6pm

Come and join us for an evening of science investigations!

Feel free to explore each of the activities in the classrooms below:

## Explore:



- Spinners in Year 1P
- Aeroplanes in Year 2M
- Magnets in Year 3O
- Sound in Year 4S



- Space (telescopes) on the KS2 playground via the Year 5 classroom
- Circuits in Year 6M

In the hall we will have an amazing planetarium for you to view the planets and stars!



	Year 1	5.00-5.10
Please visit the	Year 2	5.10 - 5.20
planetarium at the	Year 3	5.20 - 5.30
time slot allocated to	Year 4	5.30 - 5.40
your child's year group:	Year 5	5.40 - 5.50
	Year 6	5.50 - 6.00



# *CUPPA*

## *WITH YOUR COPPER*

### JOINED BY TEAM AUDENSHAW



**Monday 20th January 2025**

**6.30pm - 7.30pm**

**Venue: Ryecroft Hall**

Follow our Facebook for  
Community updates:



[www.facebook.com  
/TeamAudenshaw](https://www.facebook.com/TeamAudenshaw)

**RE-LAUNCH  
FOR 2025**

# Big Friendly Book Return

Help us find our  
missing books & get a  
fresh start!

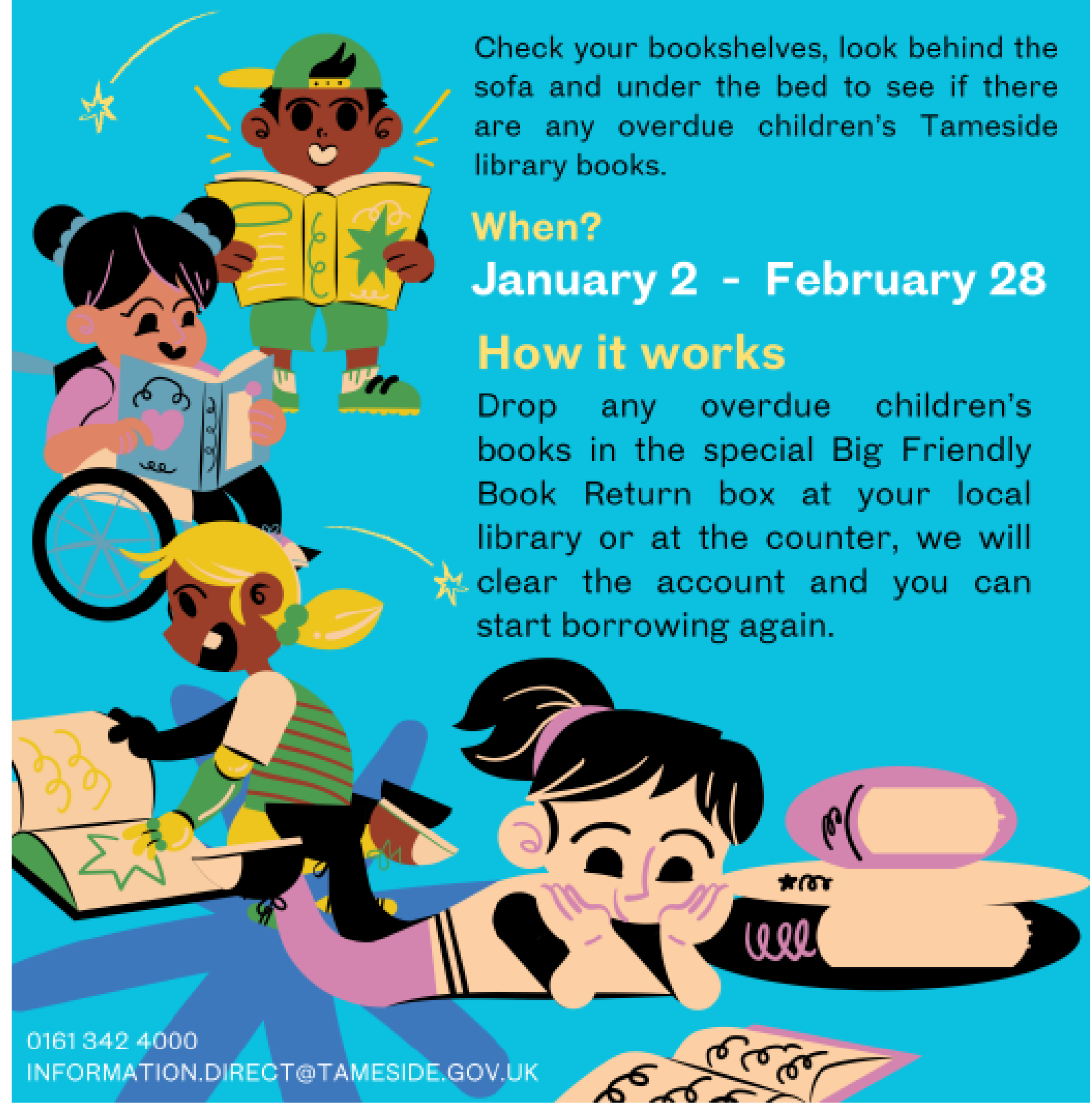
Check your bookshelves, look behind the sofa and under the bed to see if there are any overdue children's Tameside library books.

**When?**

**January 2 - February 28**

**How it works**

Drop any overdue children's books in the special Big Friendly Book Return box at your local library or at the counter, we will clear the account and you can start borrowing again.



# What's on?



## Activity timetable for Tameside



@growintameside



'Grow in Tameside'



www.gotogrow  
tameside.co.uk



0161 342 5197

### JANUARY - FEBRUARY TIMETABLE

Day	Time	West Family Hub Activities	Venue
Monday	9:30am - 10:45am	Mini Explorers (9 months - walking) (weekly booking)	West Family Hub
	11:15am-12:15pm	Small Talk (9-18m) (6 week block booking)	West Family Hub
	1:00pm - 3:00pm	Childminder Session (Weekly drop in)	West Family Hub
	1:30pm-2:30pm	Baby Babble (0-9m) (6 week block booking)	West Family Hub
Tuesday	10:00am - 11:00am	Move and Play (Birth -9 months) (6 week block booking)	Denton Wellness Centre
	1:00pm - 2:15pm	Baby Group (Birth - 9 months) (weekly booking)	West Family Hub
Wednesday	9:30am - 10:30am	Move and Play (18 - 30 months) (weekly booking)	Denton Wellness Centre Soft Play
	9:30am - 11:30am	Breastfeeding Support Group Drop - In (delivered by Home Start)	West Family Hub
	1:15pm - 2:15pm	Move & Play (9mths - 18mths) (weekly booking)	West Family Hub
	1:30pm - 2:30pm	Introduction to Weaning Session - Drop In (8th Jan & 12th Feb) (delivered by Health Visiting Team)	West Family Hub
Thursday	10:00am-11:00am	Explorers (0-4yrs) (weekly booking)	Oasis Centre Denton
	10:00am-11.30am	With you in Mind (Support group from pregnancy to 2 yrs) (To book contact Leila on 07803699360)	Ryecroft Hall
	12:30pm-2pm	Pitter, Patter, Play and Natter (Support group from pregnancy to 2 yrs) (To book contact Leila on 07803699360)	Ryecroft Hall
Friday	9:30am - 10:45am	Little Explorers (Walking - 2.5yrs) (weekly booking)	West Family Hub
	11:00-am12:15pm	Pre School Explorers (2.5yrs+) (weekly booking)	West Family Hub